

1.0

USB2AM-1G

User's Guide & Manual

Index

Introduction	1
Features	1
Driver support	2
Driver installation	3
Windows 98 installation	3
Windows ME installation	7
Windows 2000 installation	10
Windows XP installation	14
Troubleshooting	16



1. Introduction:

The USB 2.0 Gigabit FastEthernet Adapter provides plug-and-play 10/100/1000 Mbps dual speed Ethernet connection for PCs, notebooks and laptops. The device complies with USB Specification 2.0, 1.0 and 1.1. It uses a RJ-45 connector to a 1000Base-T, 100Base-TX or 10Base-T Ethernet link. This low power-consuming device draws power from host USB bus, thus no external power supply is required.

2. Features:

- Single chip USB to 10/100/1000 Gigabit Ethernet and HomePNA and HomePlug Network Controller
- USB specification 1.0 & 1.1 & 2.0 compliant
- IEEE 802.3, 802.3u, and 802.3ab (10BASE-T, 100BASE-TX, and 1000BASE-T) compatible
- High performance packet transfer rate over USB bus using proprietary burst transfer mechanism
- Supports both full-duplex and half-duplex operation in Fast Ethernet.
- Supports Suspend mode and Remote Wakeup via Link-up, Magic packet, or external pin
- Supports Jumbo packet of up to 9KB
- Provides MII/GMII/RGMII interfaces for Ethernet PHY interface and MII interface for HomePNA/HomePlug PHY interface
- Integrates on-chip 3.3V and 2.5V voltage regulator and requires only single power supply : 3.3V
- LEDs diagnostics and monitoring indicators

Certification-EMC

- FCC, Class B
- CE, Class B

Power Consumption

- Half Duplex operation
 - 10Mbps mode: 120~129mA
 - 100Mbps mode: 150~151mA
- Full Duplex operation

- 10Mbps mode: 120~125mA
- 100Mbps mode: 150~151mA
- 1000Mbps mode: 341~344mA

Physical characteristics

- Temperature: 0 ~ 70degree Celsius
- Humidity: 10% to 90%
- Distance: 100 m Hub to Node

1000 Mbps LED

This LED is used to indicate the Ethernet speed: Green means "connected with 1000 Base-TX Ethernet network", and will flash on and off intermittently when the PC is transmitting or receiving packets from the network.

100 Mbps LED

This LED is used to indicate the Ethernet speed: Green means "connected with 100 Base-TX Ethernet network", and will flash on and off intermittently when the PC is transmitting or receiving packets from the network.

10 Mbps LED

This LED is used to indicate the Ethernet connection: Green means "connected with 10 Base-TX Ethernet network", and will flash on and off intermittently when the PC is transmitting or receiving packets from the network.

3. Driver support:

Windows 98SE, Windows ME, Windows 2000, Windows XP

4. Driver installation:

-Windows 98 installation:

1. Make sure your PC is powered on and that you are at the Windows 98 operating system.
2. Insert the device into the USB port on your PC. The system will display the "Add New Hardware Wizard" dialog box. Insert the driver diskette into floppy and then click the "Next" button.



3. Select "Search for the best driver for your device (Recommended)", click the "Next" button.



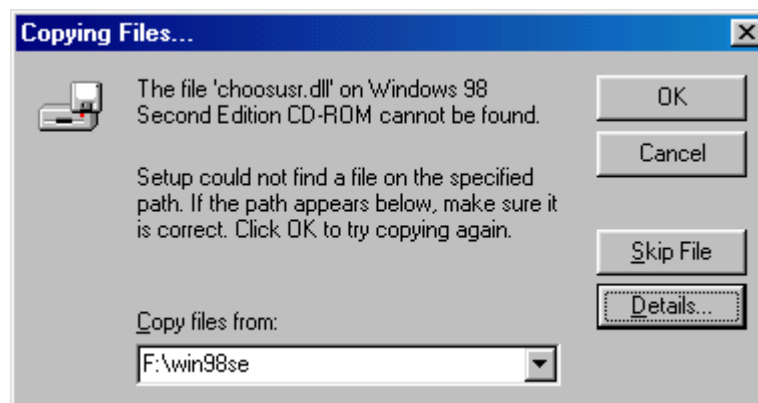
4. Select "Specify a location" and then enter the directory where the driver is located. Click the "Next" button.



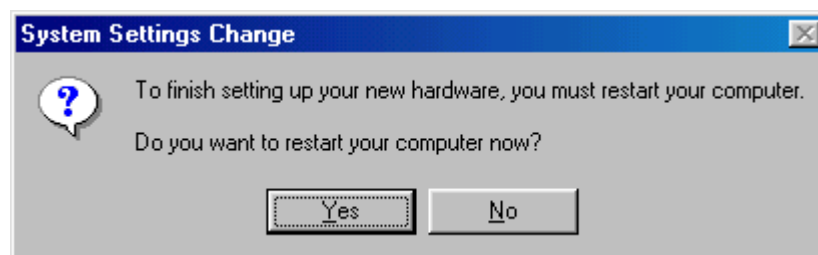
5. Click the "Next" button after the information file is detected.



6. Windows may request you to "Insert Windows 98 CD-ROM into the driver selected, and click OK". Follow the instruction and input CD-ROM or disks as needed, direct Windows to the proper location, and then click "OK" button.



7. When the installation is completed, click the "Finish" button and then restart the system.



-Windows ME installation:

1. Make sure your PC is powered on and that you are at the Windows ME operating system.
2. Insert the device into the USB port on your PC, the system will recognize the device. It and show "Add New Hardware Wizard", select "Specify the location of the driver (Advanced)" and the insert the driver diskette and then click the "Next" button.



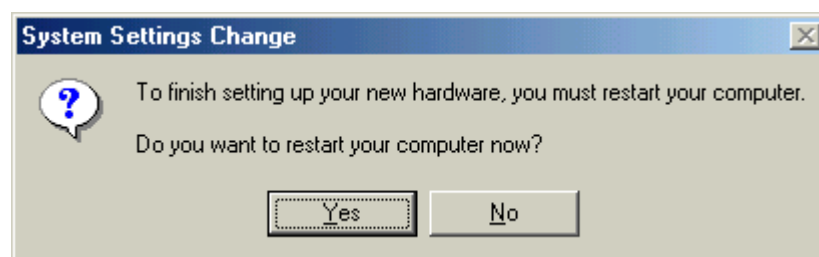
3. Select "Specify a location" and enter the directory where the driver located. Click the "Next" button.



4. Click the "Next" button after the information file is detected.



5. When the installation is completed, click the "Finish" button and then restart the system.



-Windows 2000 installation

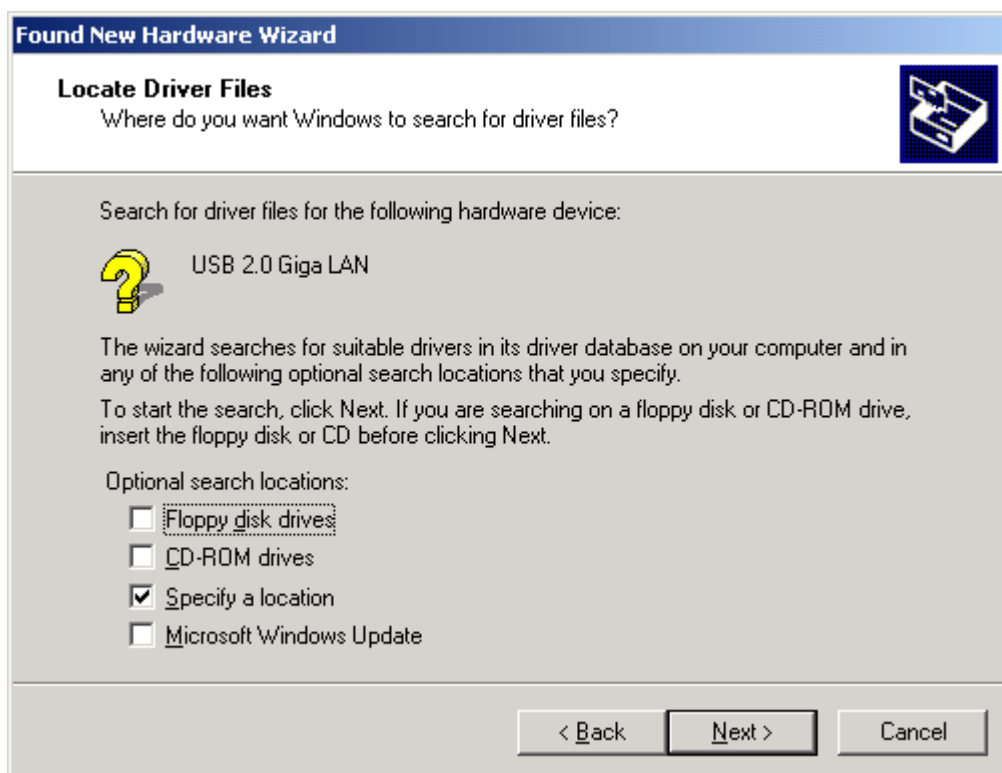
1. Make sure your PC is powered on and that you are at the Windows 2000 operating system.
2. Insert the device into the USB port on your PC. The system will display the "Found New Hardware Wizard" dialog box. Insert the driver diskette into floppy driver and then click the "Next" button.



3. Select "Search for a suitable driver for my device (Recommended)", and then click the "Next" button.



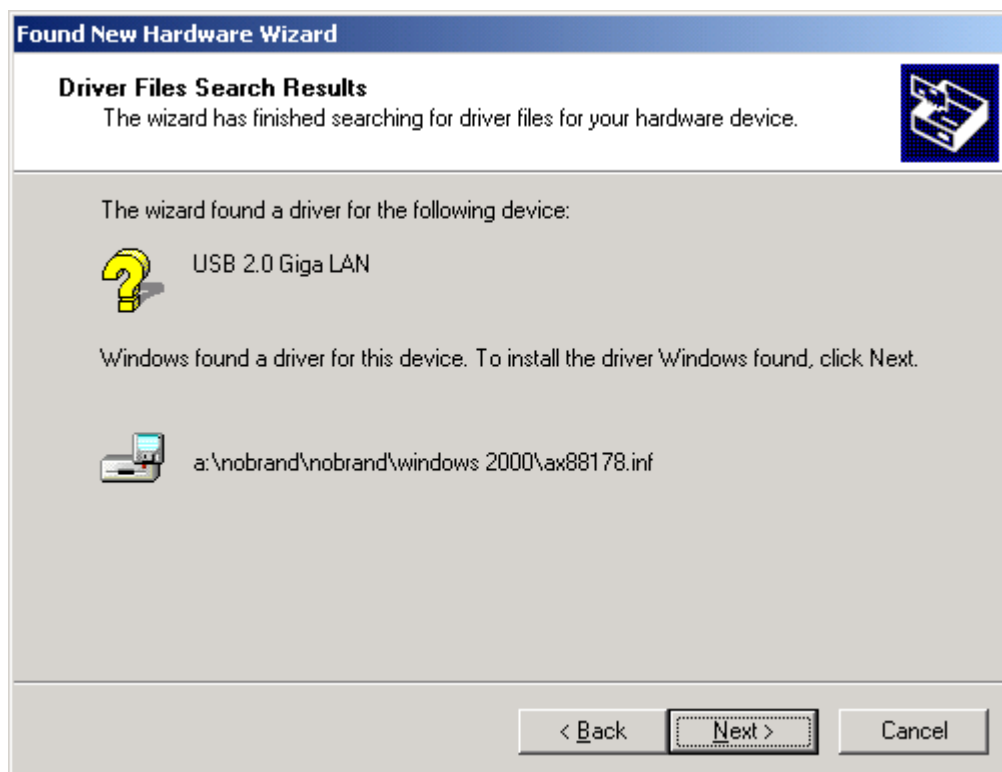
4. Mark "Specify a location" and then click "Next" button.



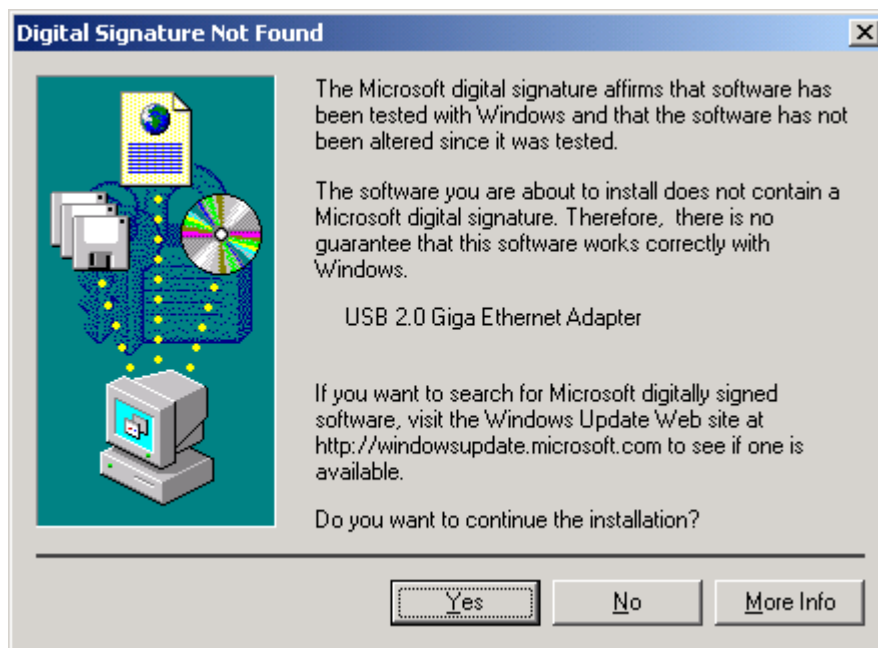
5. Enter the directory where the driver located and then click the "OK" button.



6. Click the "Next" button after the information file is detected.



7. Click the "Yes" button while the "Digital Signature Not Found" appeals as below.



8. Click the "Finish" button to complete the installation.

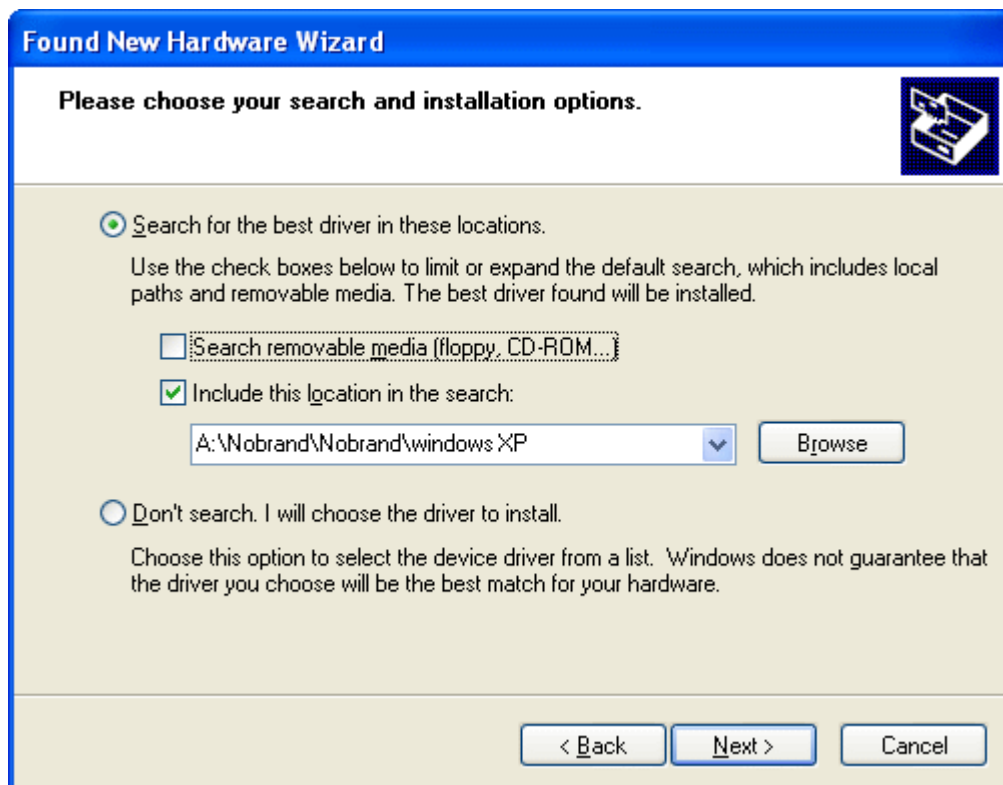


-Windows XP installation

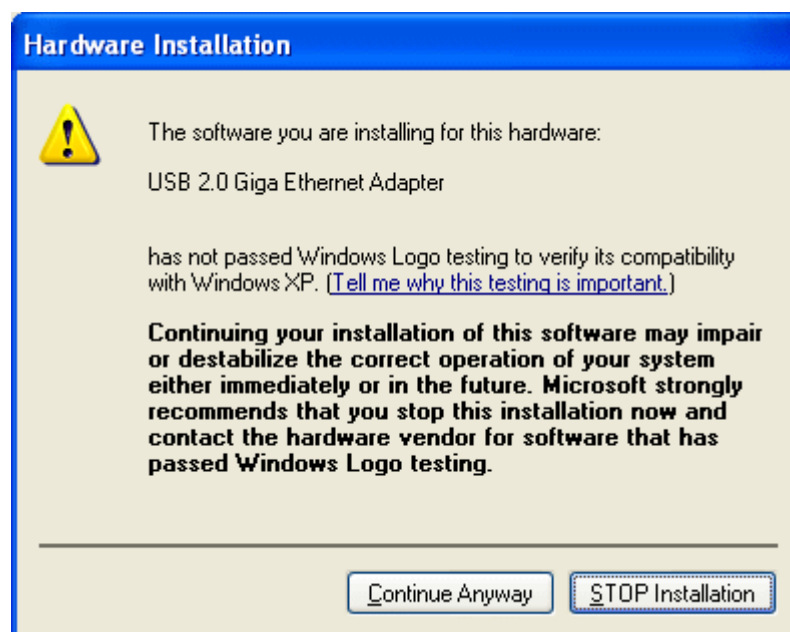
1. Make sure your PC is powered on and that you are at the Windows ME operating system.
2. Insert the device into the USB port on your PC. Windows XP will recognize the device and show "Found New hardware Wizard". Select "Install from a list specific location (Advanced)" and insert the driver diskette. Click the "Next" button.



3. Enter the directory where the driver located and then click "Next" button.



4. Windows will pop-up a "Hardware Installation" windows please click "Continue Anyway", the system will automatically copy the driver files and related files into the system.



- 5 .Click the "Finish" button to complete the installation.

4. Troubleshooting:

General Troubleshooting Tips

Q1. When I plug in my USB 2.0 Giga Ethernet Adapter, no LED indicator signal is shown, what's going on?

A: If your USB 2.0 Giga Ethernet Adapter doesn't have any LED signal, it means that your USB 2.0 Giga Ethernet Adapter is not getting any power. Therefore, you need to check PC's USB Hubs are working properly.

Q2. Currently a USB device is using my USB port. Can I use the USB 2.0 Giga Ethernet adapter simultaneously?

A: Yes, you can connect up to 127 devices to run simultaneously on one computer. If you have only one USB port on your computer, you will need to use a USB HUB device, which will provide you with additional USB ports.

Q3. Do I need to connect an external power supply to the USB 2.0 Giga Ethernet adapter?

A: No, It is a self-bus power device. There is no need to connect external power supply.